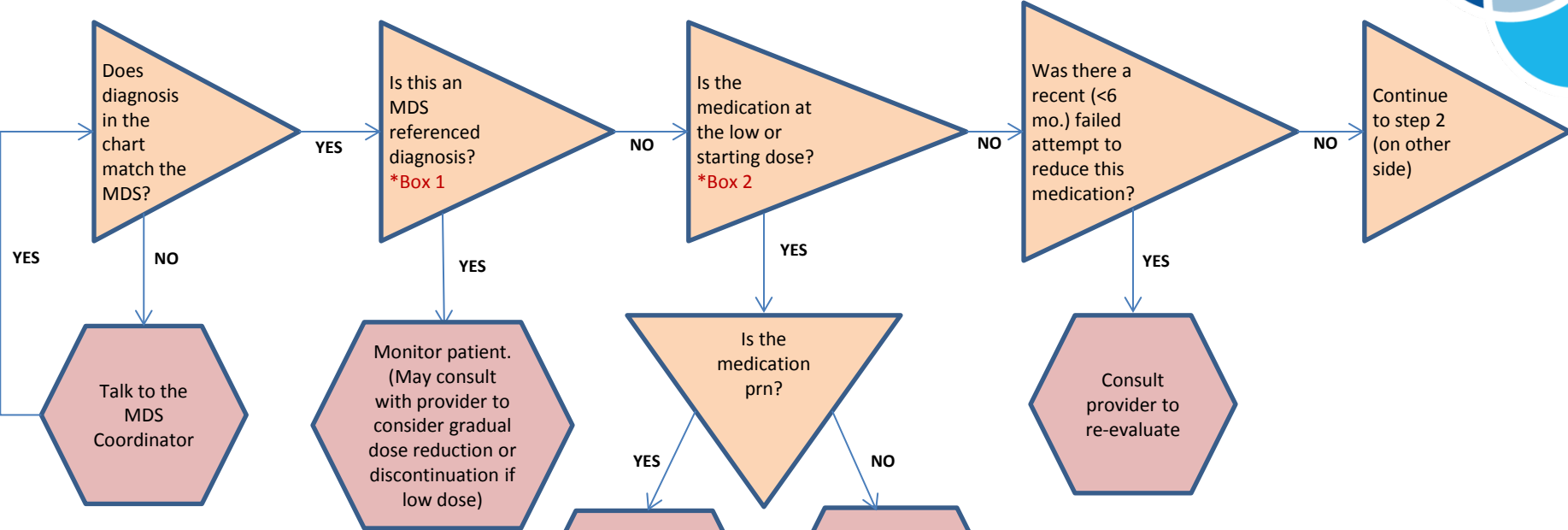


# Antipsychotic Reduction; Resident Prioritization Tool \*Part 1

The Residents in the pink hexagons are intended to be addressed before moving to Step 2



**Box 1**  
MDS Referenced Diagnosis

- Schizophrenia
- Schizoaffective disorder
- Tourette's Syndrome
- Huntington Disease

\*consult MDS for more information

**Box 2**  
Common Low or Starting Dose

- Quetiapine (Seroquel) 12.5-25mg
- Olanzapine (Zyprexa) 2.5-5mg
- Risperidone (Risperdal) 0.25-0.5mg
- Aripiprazole (Abilify) 2-5mg
- Ziprasidone (Geodon) 20-40mg

This material was prepared by Telligen, Medicare Quality Innovation Network Quality Improvement Organization, under contract with the Centers for Medicare & Medicaid Services (CMS), an agency of the U.S. Department of Health and Human Services. The contents presented do not necessarily reflect CMS policy. 11SOW-IA-C2-01/15-044

