

Transportation Collaborative Framework

Kim Harmon

Waccamaw Regional Council
of Governments

843-436-2110

www.wrcog.org

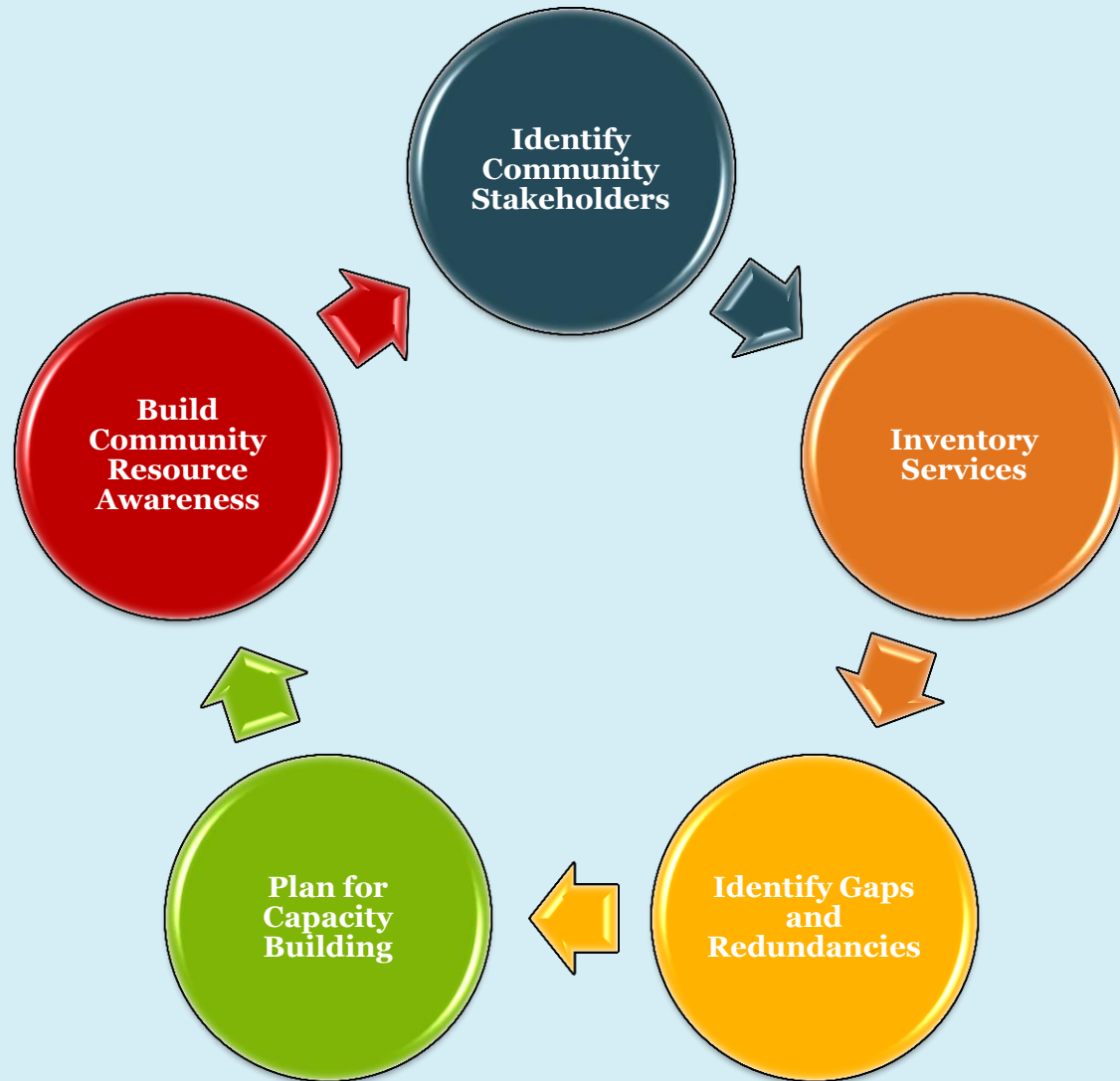
Linda Bonesteel

Tidelands Community Care
Network

843-520-8570

Lbonesteel@Tidelandshealth.org

Creating Shared Vision & Implementation Strategies



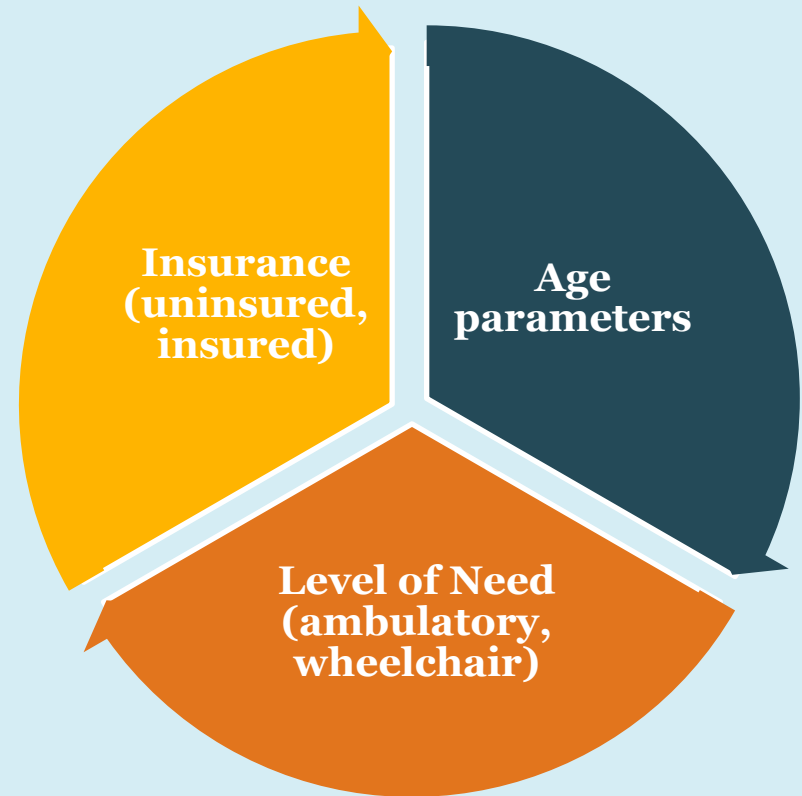
Transportation Collaborative Partners

- Neighbor to Neighbor a Program of Grace
- LogistiCare
- Medshore Ambulance Services
- American Cancer Society
- Friendship Place
- Low Country Veterans Group
- Waccamaw Regional Council of Governments
- Smith Medical Clinic
- St. James-Santee Family Health Center, Inc.
- Tidelands Community Care Network
- Tidelands Health Foundation

Developing a Shared Scope of Service

Target Population:

- Geographic Coverage Area
- Types of Rides (Primary Care, Specialty Care, Pharmacy, radiation, dialysis)
- Identify impact matrix



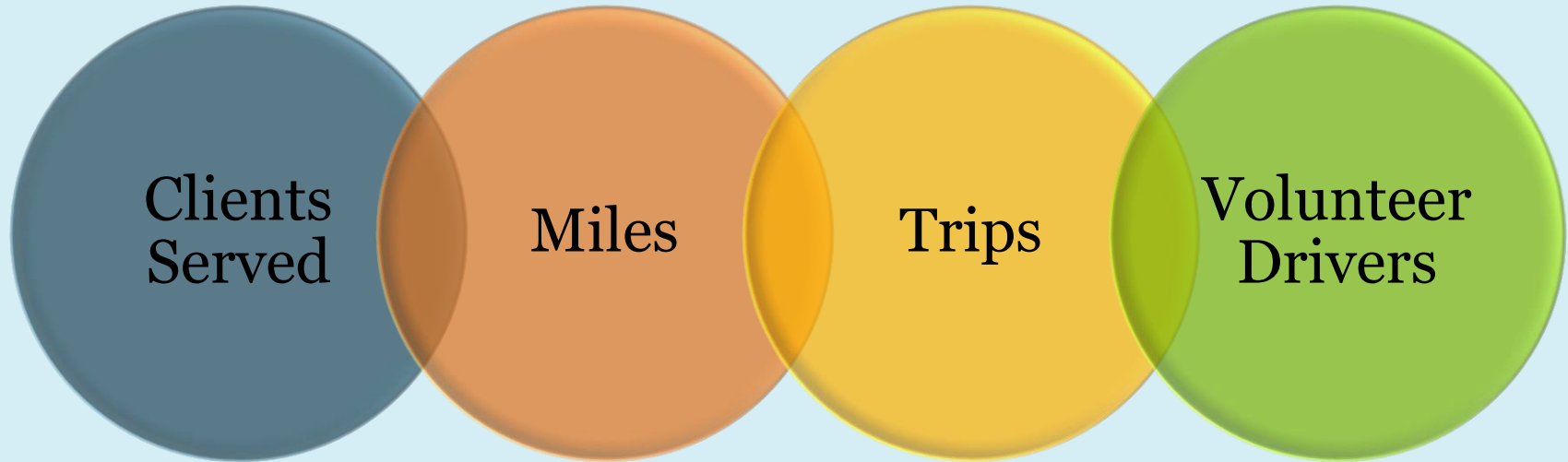
Inventory and Gap Identification

- **Public funds for transportation are often limited**
- **State funding for public transportation decreased by 15% in recent years**
- **Eligibility criteria and destinations limit options for transportation disadvantaged**
- **Need outweighs available funds**
- **Requests exceed volunteers**
- **Wheel chair transports limitations**

Increasing Community Capacity: Collaborative Opportunities

- FQHC's transportation expansion
- Volunteer Rides Programs
- EMS Collaborative
- Community Commitment to Volunteer Recruitment
- Hospital Foundation Partnerships
- Free Clinic... YMCA.... Volunteer Rides
Innovative Initiatives

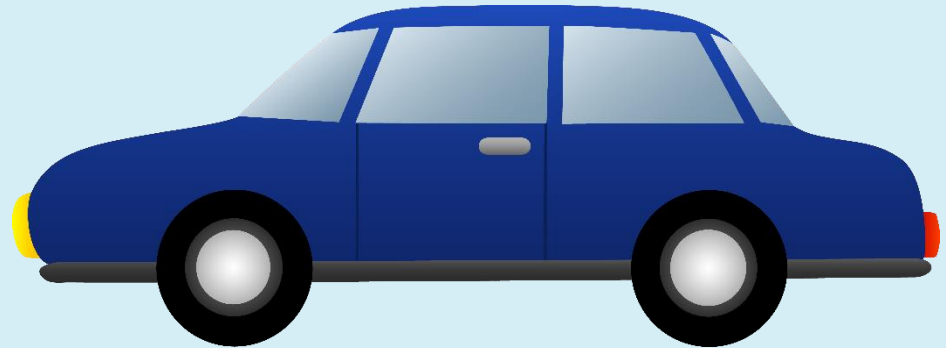
Impact Matrix



January 2013 – March 2016

- One Way Rides – 20,672
- Miles – 1,174,183
- Riders – 744
- Drivers – 209

Aging Disability Resource Center Assisted Rides program



Insurance For Volunteer Programs

- As a volunteer, you must have an active vehicle insurance policy that meets or exceeds SC requirements
- ARP provides an umbrella insurance policy in case of accident or incident while performing volunteer duties
- Personal insurance will provide primary coverage in the event of an accident
- Passengers sign liability waiver

Victoria Brooks, Account Executive

CIMA

Direct Dial: [703.778.7301](tel:703.778.7301)

Direct Fax: [703.778.7351](tel:703.778.7351)

Toll Free: [800.222.8920](tel:800.222.8920)

www.cimaworld.com



- *With offices in the Washington and Baltimore areas*
- Headquarters and mailing address for all offices: 2750 Killarney Drive, Suite 202, Woodbridge, VA 22192
- *CIMA is composed of The CIMA Companies, Inc., Corporate Insurance Management, Inc., and XS/Group, Inc. For a specific list of officers by corporation, or corporate license information, please send your request to corporatesecretary@cimaworld.com.*

RideScheduler

RideScheduler – Volunteer Transportation Made Simple!

RideScheduler is a web based application for managing volunteer based transportation programs. It provides a simple and intuitive way for coordinators to easily add ride requests and for drivers to be able to log on, view and accept available rides based on their availability. Drivers can also view their future rides along with those that they have already provided.

Steve Ewart

RideScheduler

www.RideScheduler.com

steve@RideScheduler.com

*The Easy, Effective, Affordable Way to Manage
Your Transportation Program*